

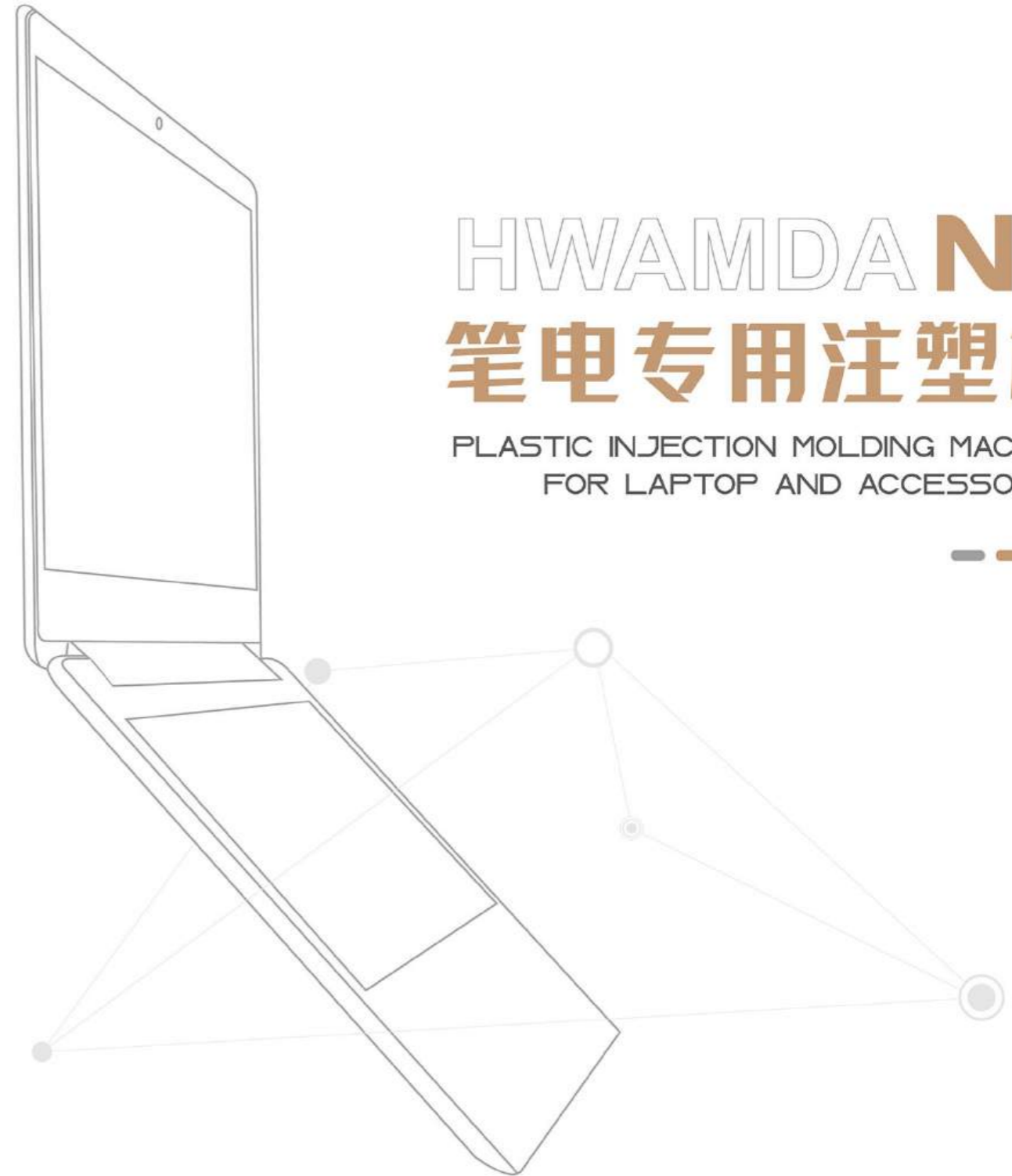


**CHINA-HWAMDA**  
THE CRAFTSMANSHIP OF THE WORLD  
中国的华美达,世界的工匠心

# HWAMDA NS

## 笔电专用注塑机

PLASTIC INJECTION MOLDING MACHINE  
FOR LAPTOP AND ACCESSORIES



宁波华美达集团有限公司  
NINGBO HWAMDA GROUP CO., LTD.

地址: 浙江省宁波市小港安屠路368号  
Add: Anju Road No.368, Xiao Gang Street,  
Ningbo, Zhejiang, P.R. China  
邮编 ( P.C. ): 315801  
Http://www.hwamda.com

国内销售  
电话: 0574-86175111  
0574-86176676  
传真: 0574-86176890  
邮箱: info@hwamda.com

International  
Tel: 86-574-86176630  
86-574-86228735  
Fax: 86-574-86228918  
E-mail: sales@hwamda.com



宁波华美达集团有限公司  
NINGBO HWAMDA GROUP CO., LTD.



宁波华美达机械制造有限公司地处“中国塑机之都”的浙江省宁波市，是一家专业化生产塑胶注塑成型机械的高新技术企业，经过不断的技术创新，公司自主研发的系列产品已广泛应用于汽车、电子、医疗、环保、包装、物流等众多注塑生产行业，目前，华美达已经成长为具有雄厚规模和竞争实力的中国注塑机行业前列企业。

华美达拥有4个生产基地，超过10万平方米厂房设施，各种大型先进精密加工设备，团结了一支高素质的企业管理与技术创新团队。公司一直致力于高效节能型注塑机的开发制造与市场推广，已成功推出的有伺服节能注塑机、二板注塑机、全电动注塑机、高速精密注塑机、双色注塑机等多个系列以及各种行业专用型产品。

为贴近客户，公司大力开拓国际市场，在国内外建立60余处完善的销售机构及海外服务中心，华美达注塑机受到了北美、中东、南美、东南亚、欧洲等各个国家和地区客户的使用和欢迎，建立了面向国际的营销体系。

华美达公司通过了ISO9001、ISO14001、OHSAS18001管理体系认证以及CE产品认证，所生产的各系列注塑机均配备世界知名品牌的液压、电器及控制系统，引进国际领先设计理念，通过严格的检验、加工、装配、调试，为客户提供最优质的产品与服务。

一流的品质，是华美达执着追求的重要目标。尽力满足顾客需求，以精益求精、开拓进取的企业精神缔造辉煌的未来。公司始终坚持“专心专注，做好塑机”的企业理念，为中国注塑机械产业的发展和提高做出自己的贡献。

## 关于华美达 About US



Ningbo Hwamda Machinery Manufacturing Co., Ltd. is a new and high technology enterprise devoted to manufacture plastic injection machine, lying in the "City of China plastic molding machine" - Ningbo, Zhejiang.

Now, Hwamda Company owns four factories with more than one hundred thousand square meters. There are over 400 workers and staff members, holding together a high-quality team of managers and technical team. Our company always devoted to R&D for high efficiency and energy-saving injection molding machine. At present, our main products including servo motor energy saving machines, two platen machines, full electric machines, high speed machine for thin-wall products, twin-color machines and other standard or special injection molding machines.

Following the idea of serving customers, we have established more than 60 perfect sales & service branch in China and abroad. Hwamda machine has sold to many countries such as North America, Europe, Russia, Poland, Mexico, India, Sri Lanka, Egypt, Brazil, Peru, Colombia, etc. Hwamda has gradually set up a marketing system covering both the domestic and overseas markets.

Hwamda has passed the ISO9001, ISO14001, OHSAS18001 and CE certification. All the series of injection machine are equipped with world famous hydraulic & electric elements and control system. Through strict inspection, assembly and test, Hwamda has provided first-class products and services to customers.

"First-class quality" is what we are pursuing the most. We will try our best to meet the requirements of customers and create even better future. Our company firmly sticks to the idea of "With undivided attention to manufacture excellent plastic injection molding machines", and makes our own contribution for the development and improvement of national plastic industry.





伺服电机控制转盘, 高效节能, 精确稳定。  
Turntable control by servo motor, high efficiency and energy-saving.



单缸注射机构, 搭配线性导轨支座设计, 更适应高速生产要求。

Single cylinder injection base advance unit with guide linear.



射台机架部分预留前后位置, 方便安装小射台或短螺杆。  
Special reserved in the injection unit frame to install the smaller injection unit or short screw.



模块化设计, 方便不同规格注射机构大小射台互换。  
Modular design, injection unit can exchange with different model.

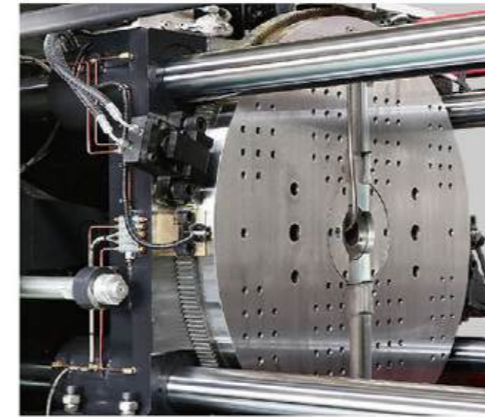


双色机专用高性能电脑控制器, 精度高、响应快。  
Optimized control system excellent in response and reactions.

## CLAMPING UNIT

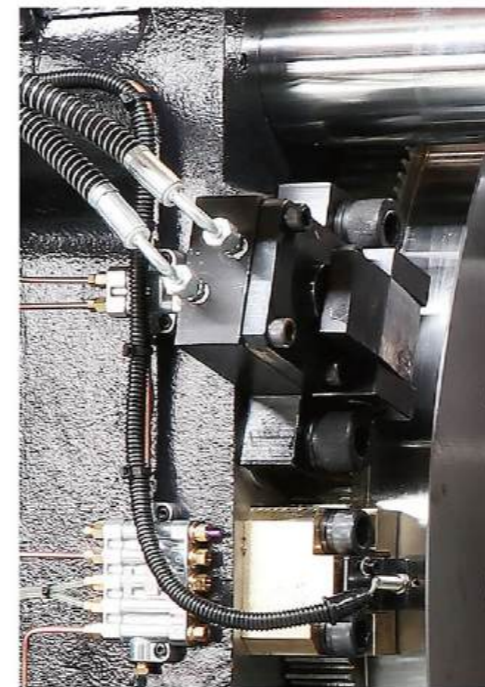
### 锁模单元

01



**1-1** 本机型动模板上设置往复180°旋转转盘, 可放置两幅模具, 生产双色分明产品; 转盘转动时模壁不接触, 减少因磨损造成故障, 在关模前均做精准的转盘定位确认, 确保模具安全。

Moveable platen with 180° turntable, can place two moulds, to produce two color products. Turntable don't touch with platen when turning, to reduce abrasion, precise to confirm turntable position before close mold, to ensure mould safety.



**1-2** 全新设计锁模机构, 运行平稳快速, 特别升级整体机械强度, 刚性好、变形小、内应力小、抗疲劳度好。

New design clamping unit provide stable and fast performance. Upgrade mechanic intensity of whole structure, rigidity and fatigue are enhanced.

**1-3** 欧式顶出结构设计, 维护更方便。

Euro ejector structure, easy maintenance and fast mount moulds.

**1-4** 拉杆、顶出导向套采用自润滑石墨铜套, 二板、尾板采用铜块, 确保快速、精确开锁模。

Tie bar and ejector guide sleeve used graphic bushing, movable platen and back platen used copper block, ensure fast and precise open/close mold.

**1-5** 由伺服电机控制转盘动作, 有效缩短转盘转动时间, 速度更快, 定位更精准。

Turntable is controlled by servo motor, can reduce the turntable turn time, can be more fast and precise.

# INJECTION UNIT

## 注射单元

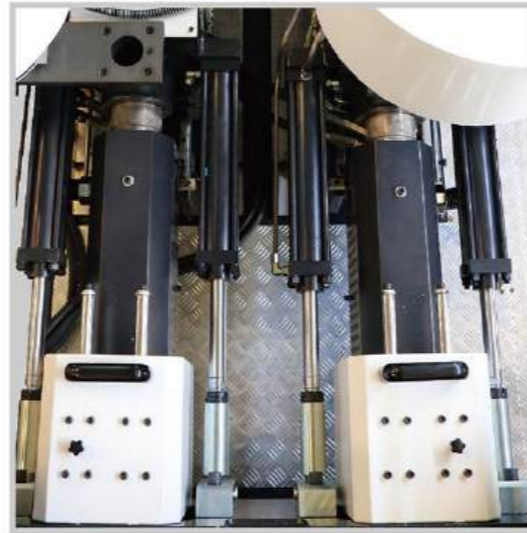
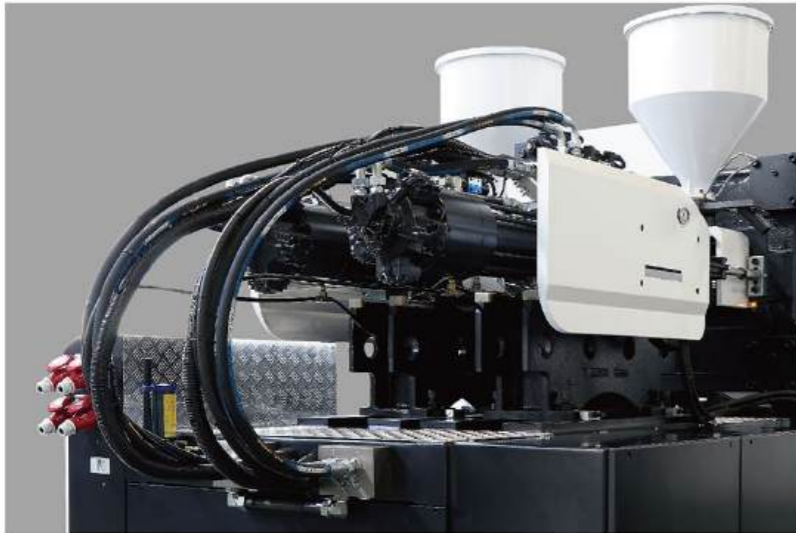
# 02

**2-1** 采用单缸注射机构，注射精度更高。

Adopt single cylinder injection base advance, higher accuracy.

**2-2** 料管采用PID温度控制，误差极低。

Barrel with PID temperature control.



**2-3** 射出部分设有两组笔电专用独立料管组，同步做射出动作，双色一次成型，大幅缩短制品成型周期。

Injection unit with double separate set screw&barrel, injection on fly, double color with one shot products, to reduce the cycle time.

**2-4** 整体射台支撑结构配合精密的双线性导轨设计，确保精确、快速的注射启动速度。

Equipped with linear guard, ensure accurate and fast injection start-up speed.

**2-5** 预留大小射台通配位置，适用于多种双色产品成型要求。

Injection unit can be with different size, adapt with different double color products.

# HYDRAULIC UNIT

## 液压单元

# 03

**3-1** 液压换向阀、高压软管等关键配件选取著名品牌，油路运行稳定可靠。

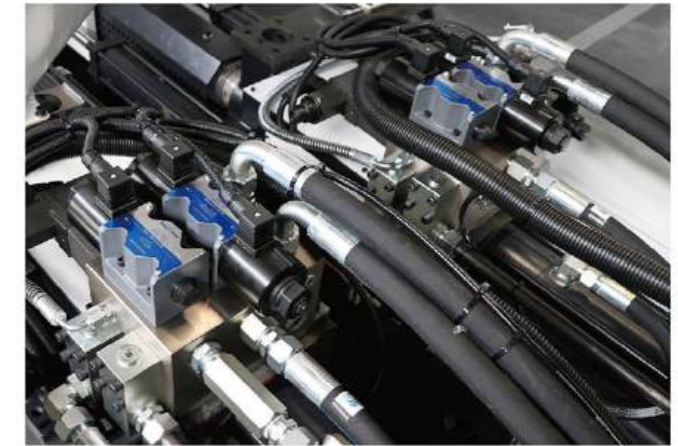
Hydraulic circuits adopt top brands valve and hose.

**3-2** 采用DIN标准锥面带密封圈接头，阀板采用G螺纹密封堵头，杜绝油质污染。

Equipped with DIN standard cone with sealing ring joint, manifold with G thread sealing gland.

**3-3** 自封式磁性吸油过滤器，油路维护更方便。

Self-sealing magnetic oil filter, convenient to maintenance.



# CONTROL SYSTEM

## 电控单元

# 04



**4-1** 选用高性能KEBA双色机专用电脑控制器，大规格彩色显示屏，精度更高。

Adapt with high-performance KEBA controller, large LCD display and man-machine friendly interface.

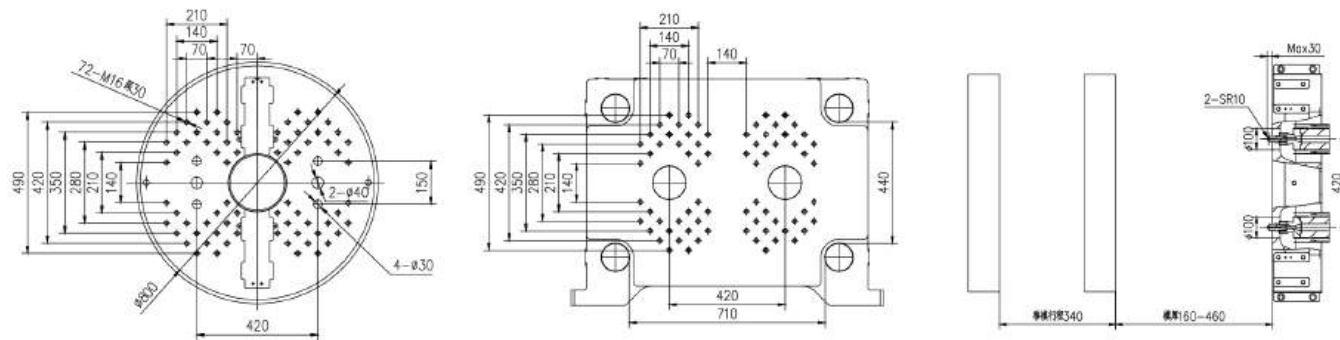
**4-2** 标配三色报警灯带蜂鸣器，机器运行状态一目了然。

Standard with 3 color alarming light.

## 技术参数表 SPECIFICATIONS

参数	PARAMETER	UNIT	HMD160DP-NS	
国际公认型号	International size rating	—	300	300
注射装置	INJECTION UNIT		A	B
理论注射容量	Injection volume(theoretical)	cm <sup>3</sup>	93	141
注射重量	Injection weight(PS)	g (克)	85	128
		oz (盎司)	3	4.5
注射速率	Injection rate	g/s	89	163
螺杆直径	Screw diameter	mm	26	32
注射压力	Injection pressure	MPa	342	226
螺杆长径比	Screw L/D ratio	—	23	21.2
螺杆行程	Screw stroke	mm	175	175
螺杆转速	Screw speed	r/ min	280	280
<b>合模装置 CLAMPING UNIT</b>				
锁模力	Clamping force	kN	1600	
移模行程	Mold opening stroke	mm	340	
模板尺寸	Platen size	mm	960×680	
转盘直径	Rotary table diameter	mm	800	
拉杆内间距	Dist. between tie bars (H × V)	mm	710×440	
模板最大距离	Max.daylight	mm	800	
容模量 (最小-最大)	Mold thickness(Min-Max)	mm	160-460	
顶出行程	Ejector stroke	mm	140	
顶出力	Ejector tonnage	kN	38×2	
料管中心距	Distance between barrel centers	mm	420	
<b>动力/电热 POWER UNIT</b>				
液压系统压力	Hydraulic system pressure	MPa	17.5	
油泵马达	Pump motor power	kW	23	31.3
电热功率	Heater power	kW	6.8	6.8
温度控制区数	Number of temp control zones	—	2×4	
<b>其它 OTHERS</b>				
油箱容积	Oil tank	L (升)	330	
外形尺寸 (L × W × H)	Machine dimension (L × W × H)	m	5.2×1.76×2.1	
机器重量	Machine weight	Ton	7.1	

### 模板尺寸 PLATEN DIMENSION

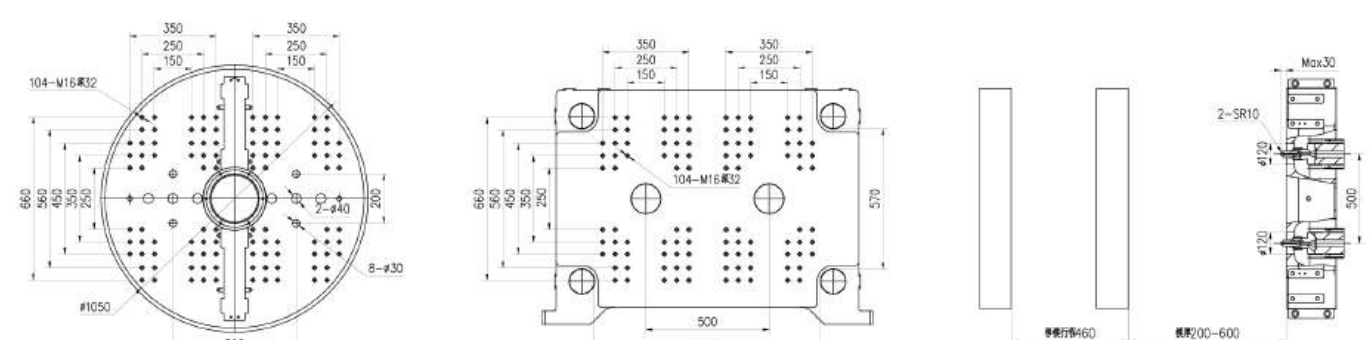


说明：由于产品改进，技术参数的变更，恕不另行通知。

## 技术参数表 SPECIFICATIONS

参数	PARAMETER	UNIT	HMD270DP-NS	
国际公认型号	International size rating	—	300	300
注射装置	INJECTION UNIT		A	B
理论注射容量	Injection volume(theoretical)	cm <sup>3</sup>	93	141
注射重量	Injection weight(PS)	g (克)	85	128
		oz (盎司)	3	4.5
注射速率	Injection rate	g/s	89	163
螺杆直径	Screw diameter	mm	26	32
注射压力	Injection pressure	MPa	342	226
螺杆长径比	Screw L/D ratio	—	23	21.2
螺杆行程	Screw stroke	mm	175	175
螺杆转速	Screw speed	r/ min	280	280
<b>合模装置 CLAMPING UNIT</b>				
锁模力	Clamping force	kN	2700	
移模行程	Mold opening stroke	mm	460	
模板尺寸	Platen size	mm	1240×880	
转盘直径	Rotary table diameter	mm	1050	
拉杆内间距	Dist. between tie bars (H × V)	mm	920×570	
模板最大距离	Max.daylight	mm	1060	
容模量 (最小-最大)	Mold thickness(Min-Max)	mm	200-600	
顶出行程	Ejector stroke	mm	140	
顶出力	Ejector tonnage	kN	45×2	
料管中心距	Distance between barrel centers	mm	500	
<b>动力/电热 POWER UNIT</b>				
液压系统压力	Hydraulic system pressure	MPa	17.5	
油泵马达	Pump motor power	kW	23	31.3
电热功率	Heater power	kW	6.8	6.8
温度控制区数	Number of temp control zones	—	2×4	
<b>其它 OTHERS</b>				
油箱容积	Oil tank	L (升)	400	
外形尺寸 (L × W × H)	Machine dimension (L × W × H)	m	6.0×2.05×2.3	
机器重量	Machine weight	Ton	11	

### 模板尺寸 PLATEN DIMENSION

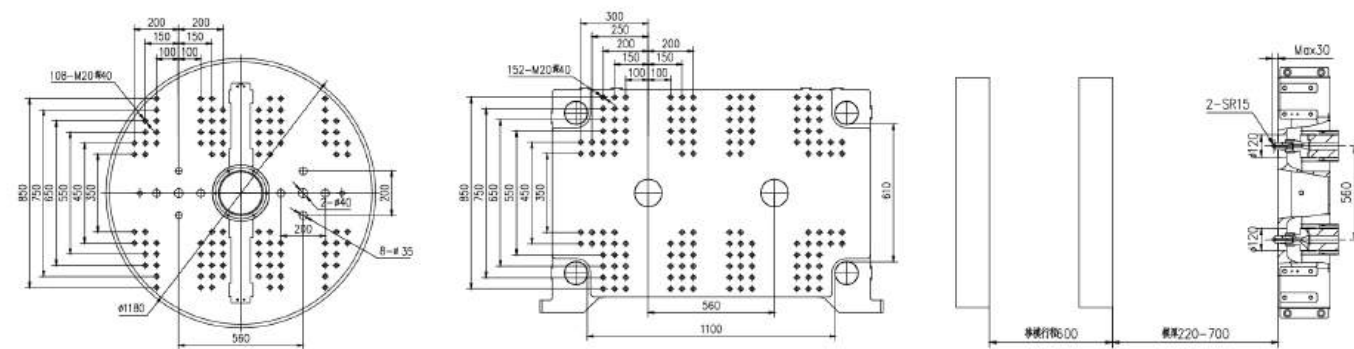


Remark: We reserve the right to make any technical improvement without prior notice.

## 技术参数表 SPECIFICATIONS

参数	PARAMETER	UNIT	HMD410DP-NS	
国际公认型号	International size rating	—	300	300
注射装置	INJECTION UNIT		A	B
理论注射容量	Injection volume(theoretical)	cm <sup>3</sup>	93	141
注射重量	Injection weight(PS)	g (克)	85	128
		oz (盎司)	3	4.5
注射速率	Injection rate	g/s	89	163
螺杆直径	Screw diameter	mm	26	32
注射压力	Injection pressure	MPa	342	226
螺杆长径比	Screw L/D ratio	—	23	21.2
螺杆行程	Screw stroke	mm	175	175
螺杆转速	Screw speed	r/ min	280	280
<b>合模装置 CLAMPING UNIT</b>				
锁模力	Clamping force	kN	4100	
移模行程	Mold opening stroke	mm	600	
模板尺寸	Platen size	mm	1480×980	
转盘直径	Rotary table diameter	mm	1180	
拉杆内间距	Dist. between tie bars (H × V)	mm	1100×610	
模板最大距离	Max.daylight	mm	1300	
容模量 (最小-最大)	Mold thickness(Min-Max)	mm	220-700	
顶出行程	Ejector stroke	mm	140	
顶出力	Ejector tonnage	kN	70×2	
料管中心距	Distance between barrel centers	mm	560	
<b>动力/电热 POWER UNIT</b>				
液压系统压力	Hydraulic system pressure	MPa	17.5	
油泵马达	Pump motor power	kW	23	31.3
电热功率	Heater power	kW	6.8	6.8
温度控制区数	Number of temp control zones	—	2×4	
<b>其它 OTHERS</b>				
油箱容积	Oil tank	L (升)	650	
外形尺寸 (L × W × H)	Machine dimension (L × W × H)	m	6.8×2.2×2.3	
机器重量	Machine weight	Ton	20.5	

### 模板尺寸 PLATEN DIMENSION

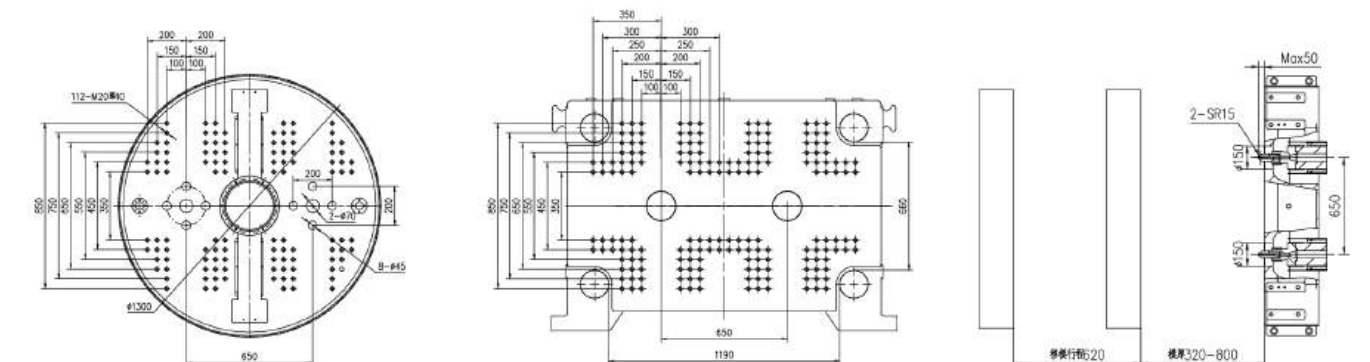


说明：由于产品改进，技术参数的变更，恕不另行通知。

## 技术参数表 SPECIFICATIONS

参数	PARAMETER	UNIT	HMD550DP-NS	
国际公认型号	International size rating	—	600	900
注射装置	INJECTION UNIT		A	B
理论注射容量	Injection volume(theoretical)	cm <sup>3</sup>	229	415
注射重量	Injection weight(PS)	g (克)	208	378
		oz (盎司)	7.4	13.3
注射速率	Injection rate	g/s	221	391
螺杆直径	Screw diameter	mm	36	46
注射压力	Injection pressure	MPa	265	239
螺杆长径比	Screw L/D ratio	—	23.7	23.3
螺杆行程	Screw stroke	mm	225	250
螺杆转速	Screw speed	r/ min	280	230
<b>合模装置 CLAMPING UNIT</b>				
锁模力	Clamping force	kN	5500	
移模行程	Mold opening stroke	mm	620	
模板尺寸	Platen size	mm	1610×1080	
转盘直径	Rotary table diameter	mm	1300	
拉杆内间距	Dist. between tie bars (H × V)	mm	1190×660	
模板最大距离	Max.daylight	mm	1420	
容模量 (最小-最大)	Mold thickness(Min-Max)	mm	320-800	
顶出行程	Ejector stroke	mm	250	
顶出力	Ejector tonnage	kN	110×2	
料管中心距	Distance between barrel centers	mm	650	
<b>动力/电热 POWER UNIT</b>				
液压系统压力	Hydraulic system pressure	MPa	17.5	
油泵马达	Pump motor power	kW	50.2	76
电热功率	Heater power	kW	16.4	22.4
温度控制区数	Number of temp control zones	—	4	5
<b>其它 OTHERS</b>				
油箱容积	Oil tank	L (升)	705	
外形尺寸 (L × W × H)	Machine dimension (L × W × H)	m	8.1×2.6×2.3	
机器重量	Machine weight	Ton	30	

### 模板尺寸 PLATEN DIMENSION

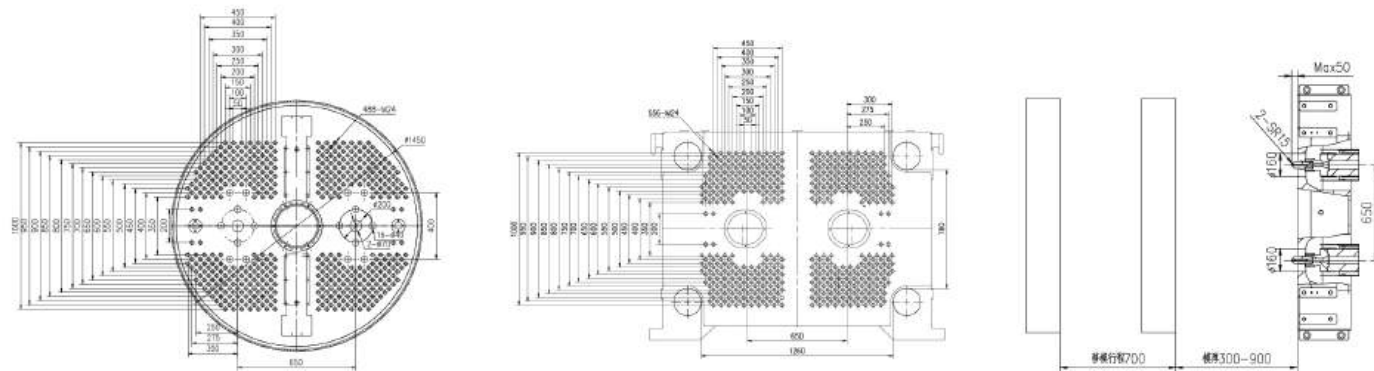


Remark: We reserve the right to make any technical improvement without prior notice.

## 技术参数表 SPECIFICATIONS

参数	PARAMETER	UNIT	HMD800DP-NS	
国际公认型号	International size rating	—	600	900
注射装置	INJECTION UNIT		A	B
理论注射容量	Injection volume(theoretical)	cm <sup>3</sup>	229	415
注射重量	Injection weight(PS)	g (克)	208	378
		oz (盎司)	7.4	13.3
注射速率	Injection rate	g/s	221	391
螺杆直径	Screw diameter	mm	36	46
注射压力	Injection pressure	MPa	265	239
螺杆长径比	Screw L/D ratio	—	23.7	23.3
螺杆行程	Screw stroke	mm	225	250
螺杆转速	Screw speed	r/ min	280	230
<b>合模装置</b>		<b>CLAMPING UNIT</b>		
锁模力	Clamping force	kN	8000	
移模行程	Mold opening stroke	mm	700	
模板尺寸	Platen size	mm	1760×1260	
转盘直径	Rotary table diameter	mm	1450	
拉杆内间距	Dist. between tie bars (H × V)	mm	1260×780	
模板最大距离	Max.daylight	mm	1600	
容模量 (最小-最大)	Mold thickness(Min-Max)	mm	300-900	
顶出行程	Ejector stroke	mm	260	
顶出力	Ejector tonnage	kN	110×2	
料管中心距	Distance between barrel centers	mm	650	
<b>动力/电热</b>		<b>POWER UNIT</b>		
液压系统压力	Hydraulic system pressure	MPa	17.5	
油泵马达	Pump motor power	kW	50.2	76
电热功率	Heater power	kW	16.4	22.4
温度控制区数	Number of temp control zones	—	4	5
<b>其它</b>		<b>OTHERS</b>		
油箱容积	Oil tank	L (升)	1050	
外形尺寸 (L × W × H)	Machine dimension (L × W × H)	m	9.21×2.8×2.3	
机器重量	Machine weight	Ton	35	

### 模板尺寸 PLATEN DIMENSION

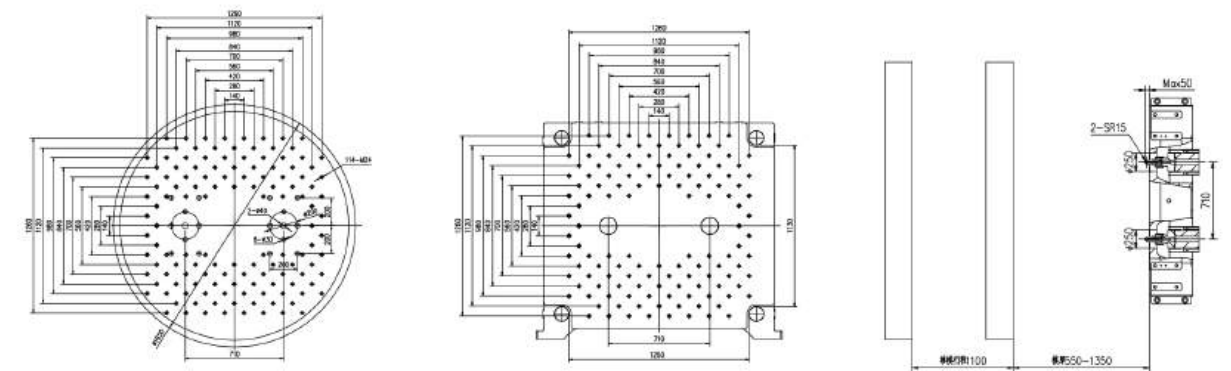


说明：由于产品改进，技术参数的变更，恕不另行通知。

## 技术参数表 SPECIFICATIONS

参数	PARAMETER	UNIT	HMD1000DP-NS	
国际公认型号	International size rating	—	600	900
注射装置	INJECTION UNIT		A	B
理论注射容量	Injection volume(theoretical)	cm <sup>3</sup>	229	415
注射重量	Injection weight(PS)	g (克)	208	378
		oz (盎司)	7.4	13.3
注射速率	Injection rate	g/s	221	391
螺杆直径	Screw diameter	mm	36	46
注射压力	Injection pressure	MPa	265	239
螺杆长径比	Screw L/D ratio	—	23.7	23.3
螺杆行程	Screw stroke	mm	225	250
螺杆转速	Screw speed	r/ min	280	230
<b>合模装置</b>		<b>CLAMPING UNIT</b>		
锁模力	Clamping force	kN	10000	
移模行程	Mold opening stroke	mm	1100	
模板尺寸	Platen size	mm	1860×1730	
转盘直径	Rotary table diameter	mm	1650	
拉杆内间距	Dist. between tie bars (H × V)	mm	1260×1130	
模板最大距离	Max.daylight	mm	2450	
容模量 (最小-最大)	Mold thickness(Min-Max)	mm	550-1350	
顶出行程	Ejector stroke	mm	300	
顶出力	Ejector tonnage	kN	110×2	
料管中心距	Distance between barrel centers	mm	710	
<b>动力/电热</b>		<b>POWER UNIT</b>		
液压系统压力	Hydraulic system pressure	MPa	17.5	
油泵马达	Pump motor power	kW	50.2	76
电热功率	Heater power	kW	16.4	22.4
温度控制区数	Number of temp control zones	—	4	5
<b>其它</b>		<b>OTHERS</b>		
油箱容积	Oil tank	L (升)	1400	
外形尺寸 (L × W × H)	Machine dimension (L × W × H)	m	12.1×2.8×2.7	
机器重量	Machine weight	Ton	55	

### 模板尺寸 PLATEN DIMENSION



Remark: We reserve the right to make any technical improvement without prior notice.

华美达笔电  
专用注塑机

PLASTIC INJECTION MOLDING MACHINE FOR LAPTOP AND ACCESSORIES

SINGLE-COLOR SOLUTION

# 单色机解决方案

## 01

### CLAMPING UNIT

#### 锁模单元



**1-1** 采用在高速机上验证过的中间加强型模板设计,并使用加粗拉杆,经有限元分析优化,使锁模机构具有运动平稳、快速、模板刚性好和拉杆寿命长的优点。

Middle part strengthen design clamping unit and robustness tie bar, with the finite element analysis and optimization, the clamping mechanism has the advantages of smooth and fast movement, good rigidity platen and long lifespan of tie bar.



**1-2** 本系列标配了T形槽,方便模具安装和拆卸。液压马达驱动自动调模装置,平稳、快速、高效,节省装模时间。

Standard with T-slot, easy mold mounted. The hydraulic motor drives the automatic mold adjustment device, stable, fast and efficient, and saves the time of mold mounted.

## 02

### INJECTION UNIT

#### 注射单元



**2-1** 优化设计的专用螺杆料筒组件,制品不易产生黑点或发黄现象。

Optimized the screw and barrel, to improve the reject ratio.

**2-2** 笔电专用的射胶系统,配合双射移油缸,确保射胶动作平稳。部分机型采用高速专用单缸射胶系统,响应更快。采用线性导轨设计,使注射和储料时阻力更低并且受力均匀,注射动作和储料背压反应更加灵敏,具有更高的注射精度。

Redesign the new injection system with twin-cylinder balanced injection system, to ensure more smooth injection. Some special models equipped with high-speed single cylinder injection unit, All series adopting linear guide design, with lower resistance. Injection and charge back pressure more fast, with high injection precision.

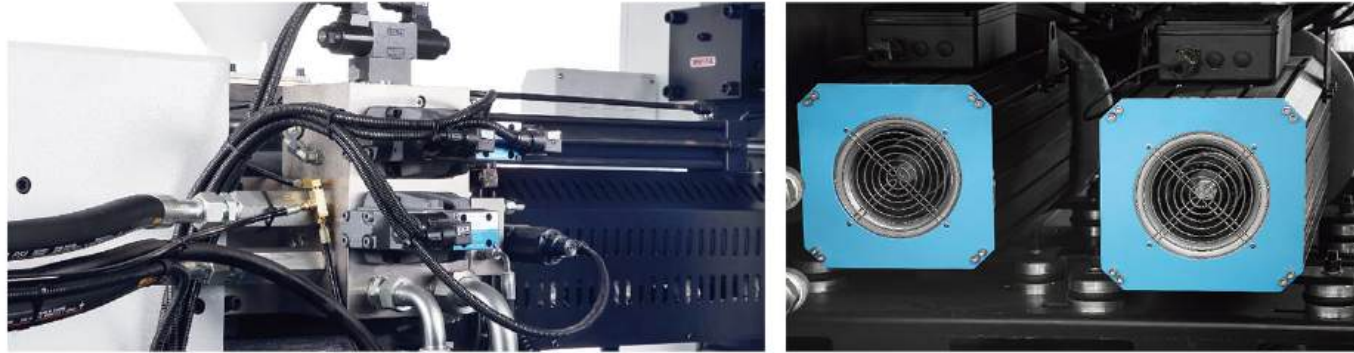
**2-3** 针对笔电制品的特点,提高注射压力和注射速度,大幅降低制品工艺调整难度,提高制品成品率。

Optimized the injection system for laptop products to improve the product yield, increase the injection pressure and injection speed.

# 03

## HYDRAULIC UNIT

### 液压单元



采用永磁同步伺服电机和专用伺服驱动器，全数字闭环控制，节能高效，响应速度快，压力控制精确，在低流量时更加稳定。

Equipped sync servo motor and driver, with digital close loop control, energy saving and high efficiency, fast response and precision control, more stable at low flow situation.

# 04

## CONTROL SYSTEM

### 电控单元

**4-1** 标配电器安全、液压安全和机械安全三种安全保护装置，增加热总开关保护，五孔插保护，提升整机安全性能。关键元件采用施耐德、ABB、OMRON等进口品牌。

Standard with safety relay, safety hydraulic valve and metal cover protection are designed in accordance with GB2530 national safety standards, adding thermal master switch protection and five-hole plug protection to improve the safety performance of the whole machine. The key components are imported brands such as Schneider, ABB, OMRON etc.

**4-2** 采用高阶注塑机专用控制器，大规格彩色显示屏，显示清晰，人机友好操作界面。

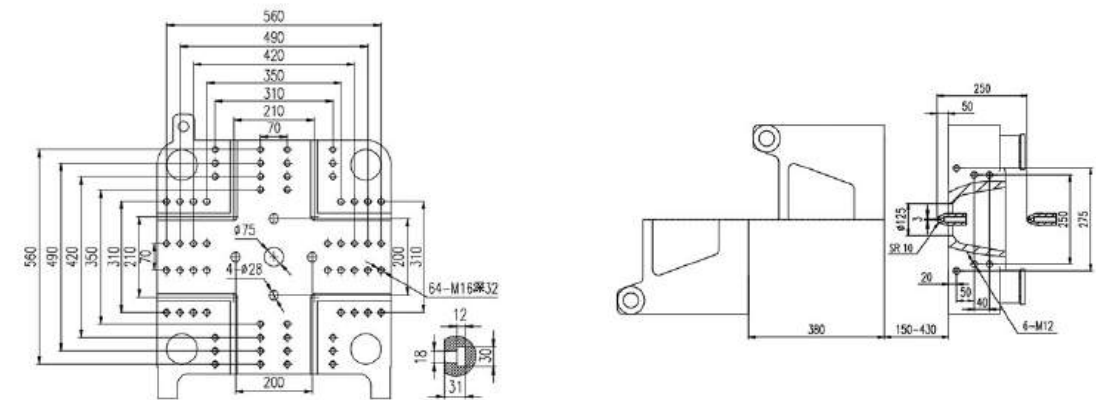
Equipped with high-performance controller, large LCD display and simple friendly operational interface.



## 技术参数表 SPECIFICATIONS

参数	PARAMETER	UNIT	HMD128MPS	
国际公认型号	International size rating	—	381/128	
<b>注射装置 INJECTION UNIT</b>				
理论注射容量	Injection volume(theoretical)	cm <sup>3</sup>	125	153
注射重量	Injection weight(PS)	g (克)	114	139
		oz (盎司)	4.0	4.9
注射速率	Injection rate	g/s	88	107
螺杆直径	Screw diameter	mm	29	32
注射压力	Injection pressure	MPa	303	249
螺杆长径比	Screw L/D ratio	—	22:1	20:1
螺杆行程	Screw stroke	mm	190	
螺杆转速	Screw speed	r/ min	0 ~ 300	
<b>合模装置 CLAMPING UNIT</b>				
锁模力	Clamping force	kN	1280	
移模行程	Mold opening stroke	mm	380	
模板尺寸	Platen size	mm	610×610	
拉杆内间距	Dist. between tie bars (H×V)	mm	410×410	
模板最大距离	Max.daylight	mm	810	
容模量(最小—最大)	Mold thickness(Min-Max)	mm	150 ~ 430	
顶出行程	Ejector stroke	mm	125	
顶出力	Ejector tonnage	kN	42	
<b>动力/电热 POWER UNIT</b>				
油压系统压力	Hydraulic system pressure	MPa	16	
油泵马达	Pump motor power	kW	21	
电热功率	Heater power	kW	6.4	
温度控制区数	Number of temp control zones	—	4	
<b>其它 OTHERS</b>				
油箱容积	Oil tank	L (升)	160	
外形尺寸(L×W×H)	Machine dimension(L×W×H)	m	4.7×1.1×1.8	
机器重量	Machine weight	Ton	4	

### 模板尺寸 PLATEN DIMENSION

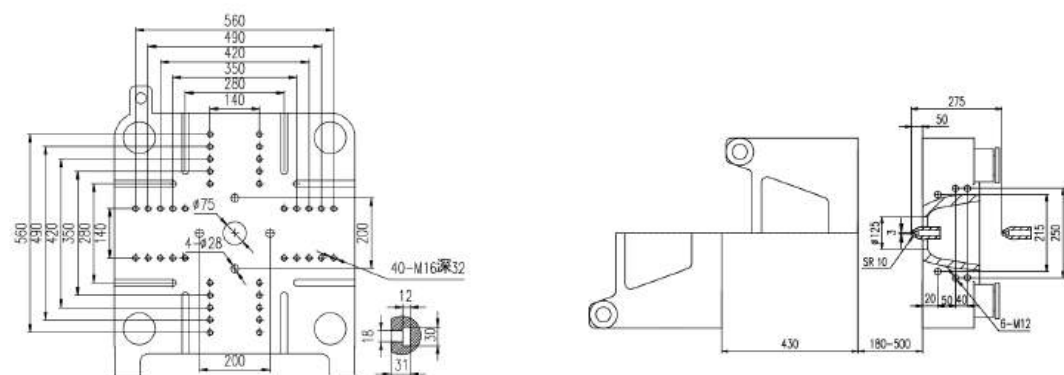


Remark: We reserve the right to make any technical improvement without prior notice.

## 技术参数表 SPECIFICATIONS

参数	PARAMETER	UNIT	HMD168MPS	
国际公认型号	International size rating	—	482/168	
注射装置	INJECTION UNIT			
理论注射容量	Injection volume(theoretical)	cm <sup>3</sup>	161	203
注射重量	Injection weight(PS)	g (克)	146	185
		oz (盎司)	5.2	6.5
注射速率	Injection rate	g/s	101	128
螺杆直径	Screw diameter	mm	32	36
注射压力	Injection pressure	MPa	300	237
螺杆长径比	Screw L/D ratio	—	23:1	20:1
螺杆行程	Screw stroke	mm	200	
螺杆转速	Screw speed	r/ min	0 ~ 275	
合模装置	CLAMPING UNIT			
锁模力	Clamping force	kN	1680	
移模行程	Mold opening stroke	mm	430	
模板尺寸	Platen size	mm	680×680	
拉杆内间距	Dist. between tie bars (H × V)	mm	460×460	
模板最大距离	Max.daylight	mm	930	
容模量 (最小—最大)	Mold thickness(Min-Max)	mm	180 ~ 500	
顶出行程	Ejector stroke	mm	140	
顶出力	Ejector tonnage	kN	50	
动力/电热	POWER UNIT			
液压系统压力	Hydraulic system pressure	MPa	16	
油泵马达	Pump motor power	kW	25	
电热功率	Heater power	kW	8.3	
温度控制区数	Number of temp control zones	—	4	
其它	OTHERS			
油箱容积	Oil tank	L (升)	200	
外形尺寸 (L × W × H)	Machine dimension (L × W × H)	m	5.3×1.2×2.1	
机器重量	Machine weight	Ton	5	

### 模板尺寸 PLATEN DIMENSION

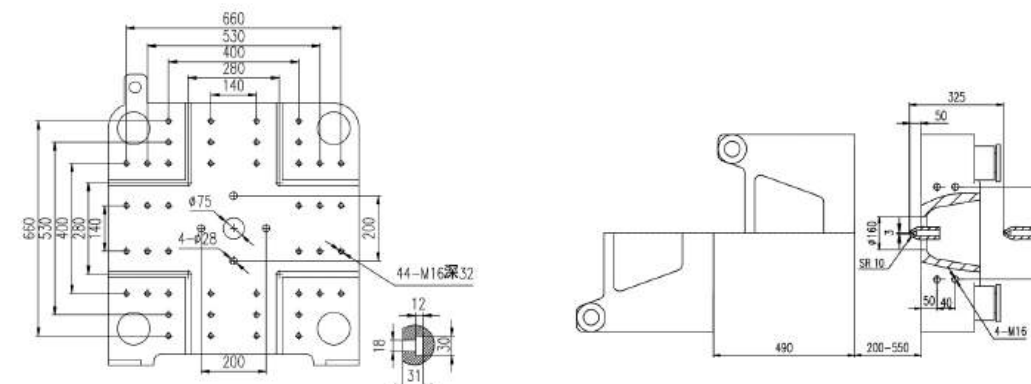


说明：由于产品改进，技术参数的变更，恕不另行通知。

## 技术参数表 SPECIFICATIONS

参数	PARAMETER	UNIT	HMD218MPS	
国际公认型号	International size rating	—	655/218	
注射装置	INJECTION UNIT			
理论注射容量	Injection volume(theoretical)	cm <sup>3</sup>	215	263
注射重量	Injection weight(PS)	g (克)	196	239
		oz (盎司)	6.9	8.4
注射速率	Injection rate	g/s	153	187
螺杆直径	Screw diameter	mm	38	42
注射压力	Injection pressure	MPa	305	250
螺杆长径比	Screw L/D ratio	—	23:1	21:1
螺杆行程	Screw stroke	mm	190	
螺杆转速	Screw speed	r/ min	0 ~ 267	
合模装置	CLAMPING UNIT			
锁模力	Clamping force	kN	2180	
移模行程	Mold opening stroke	mm	490	
模板尺寸	Platen size	mm	770×770	
拉杆内间距	Dist. between tie bars (H × V)	mm	530×530	
模板最大距离	Max.daylight	mm	1040	
容模量 (最小—最大)	Mold thickness(Min-Max)	mm	200 ~ 550	
顶出行程	Ejector stroke	mm	140	
顶出力	Ejector tonnage	kN	50	
动力/电热	POWER UNIT			
液压系统压力	Hydraulic system pressure	MPa	17.5	
油泵马达	Pump motor power	kW	27	
电热功率	Heater power	kW	11.8	
温度控制区数	Number of temp control zones	—	5	
其它	OTHERS			
油箱容积	Oil tank	L (升)	340	
外形尺寸 (L × W × H)	Machine dimension (L × W × H)	m	6.1×1.4×2.1	
机器重量	Machine weight	Ton	6.5	

### 模板尺寸 PLATEN DIMENSION



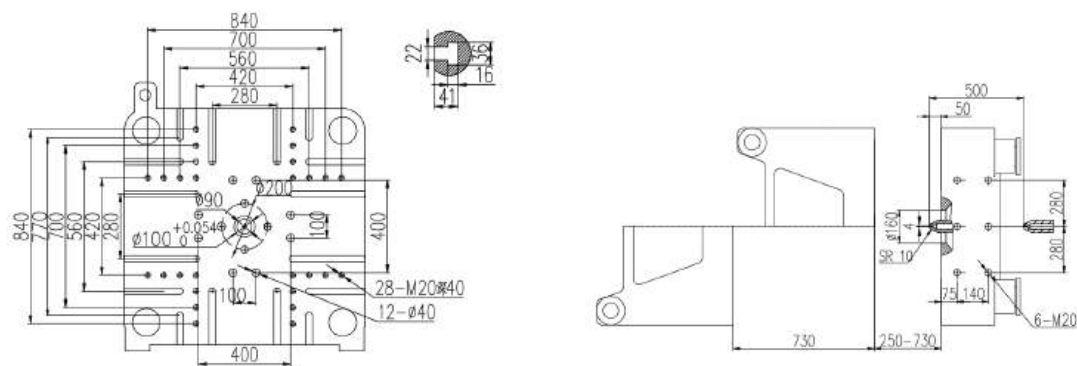
Remark: We reserve the right to make any technical improvement without prior notice.



## 技术参数表 SPECIFICATIONS

参数	PARAMETER	UNIT	HMD430NS	
国际公认型号	International size rating	—	993/430	
注射装置	INJECTION UNIT			
理论注射容量	Injection volume(theoretical)	cm <sup>3</sup>	346	415
注射重量	Injection weight(PS)	g (克)	315	378
		oz (盎司)	11.1	13.3
注射速率	Injection rate	g/s	255	305
螺杆直径	Screw diameter	mm	42	46
注射压力	Injection pressure	MPa	287	239
螺杆长径比	Screw L/D ratio	—	21.9:1	23.3:1
螺杆行程	Screw stroke	mm	250	
螺杆转速	Screw speed	r/ min	0 ~ 320	
合模装置	CLAMPING UNIT			
锁模力	Clamping force	kN	4300	
移模行程	Mold opening stroke	mm	730	
模板尺寸	Platen size	mm	1032×1042	
拉杆内间距	Dist. between tie bars (H × V)	mm	760×730	
模板最大距离	Max.daylight	mm	1460	
容模量 (最小—最大)	Mold thickness(Min—Max)	mm	250 ~ 730	
顶出行程	Ejector stroke	mm	185	
顶出力	Ejector tonnage	kN	111	
动力/电热	POWER UNIT			
油压系统压力	Hydraulic system pressure	MPa	17.5	
油泵马达	Pump motor power	kW	64.6	
电热功率	Heater power	kW	13.2	
温度控制区数	Number of temp control zones	—	5	
其它	OTHERS			
油箱容积	Oil tank	L (升)	500	
外形尺寸 (L × W × H)	Machine dimension (L × W × H)	m	8.0×2.0×2.6	
机器重量	Machine weight	Ton	17.5	

### 模板尺寸 PLATEN DIMENSION

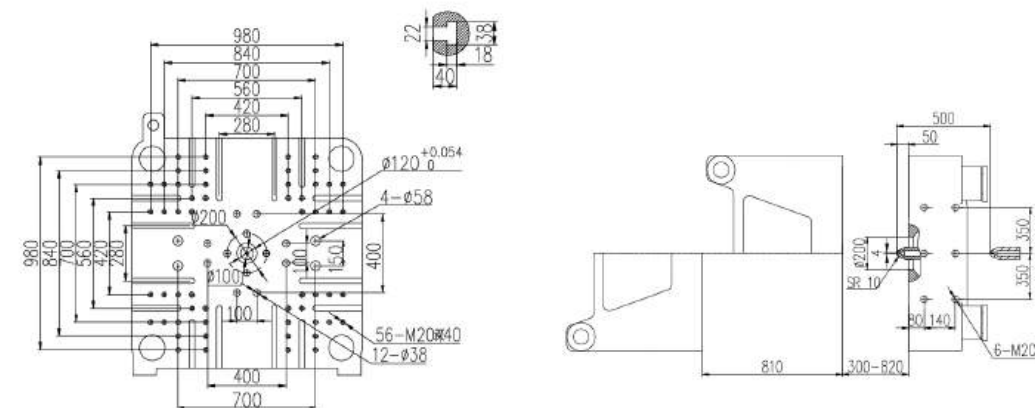


说明：由于产品改进，技术参数的变更，恕不另行通知。

## 技术参数表 SPECIFICATIONS

参数	PARAMETER	UNIT	HMD500NS	
国际公认型号	International size rating	—	993/500	
注射装置	INJECTION UNIT			
理论注射容量	Injection volume(theoretical)	cm <sup>3</sup>	346	415
注射重量	Injection weight(PS)	g (克)	315	378
		oz (盎司)	11.1	13.3
注射速率	Injection rate	g/s	293	352
螺杆直径	Screw diameter	mm	42	46
注射压力	Injection pressure	MPa	287	239
螺杆长径比	Screw L/D ratio	—	21.9:1	23.3:1
螺杆行程	Screw stroke	mm	250	
螺杆转速	Screw speed	r/ min	0 ~ 320	
合模装置	CLAMPING UNIT			
锁模力	Clamping force	kN	5000	
移模行程	Mold opening stroke	mm	810	
模板尺寸	Platen size	mm	1128×1168	
拉杆内间距	Dist. between tie bars (H × V)	mm	830×830	
模板最大距离	Max.daylight	mm	1630	
容模量 (最小—最大)	Mold thickness(Min—Max)	mm	300 ~ 820	
顶出行程	Ejector stroke	mm	210	
顶出力	Ejector tonnage	kN	111	
动力/电热	POWER UNIT			
油压系统压力	Hydraulic system pressure	MPa	17.5	
油泵马达	Pump motor power	kW	31.3+36.5	
电热功率	Heater power	kW	16.6	
温度控制区数	Number of temp control zones	—	5	
其它	OTHERS			
油箱容积	Oil tank	L (升)	590	
外形尺寸 (L × W × H)	Machine dimension (L × W × H)	m	8.3×2.1×2.6	
机器重量	Machine weight	Ton	21.5	

### 模板尺寸 PLATEN DIMENSION

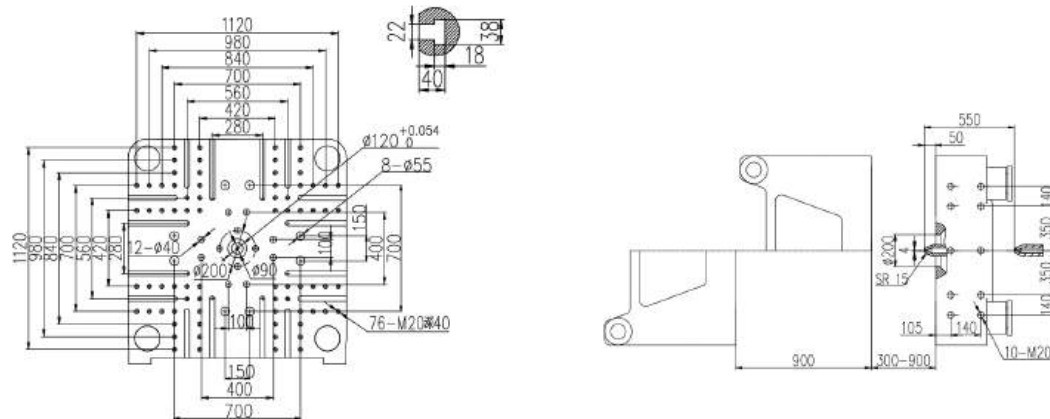


Remark: We reserve the right to make any technical improvement without prior notice.

## 技术参数表 SPECIFICATIONS

参数	PARAMETER	UNIT	HMD600NS	
国际公认型号	International size rating	—	1930/600	
注射装置	INJECTION UNIT			
理论注射容量	Injection volume(theoretical)	cm <sup>3</sup>	772	918
注射重量	Injection weight(PS)	g (克)	702	836
		oz (盎司)	24.8	29.5
注射速率	Injection rate	g/s	421	501
螺杆直径	Screw diameter	mm	55	60
注射压力	Injection pressure	MPa	250	210
螺杆长径比	Screw L/D ratio	—	22:1	22:1
螺杆行程	Screw stroke	mm	325	
螺杆转速	Screw speed	r/ min	0 ~ 300	
合模装置	CLAMPING UNIT			
锁模力	Clamping force	kN	6000	
移模行程	Mold opening stroke	mm	900	
模板尺寸	Platen size	mm	1210×1250	
拉杆内间距	Dist. between tie bars (H × V)	mm	900×880	
模板最大距离	Max.daylight	mm	1800	
容模量 (最小—最大)	Mold thickness(Min—Max)	mm	300 ~ 900	
顶出行程	Ejector stroke	mm	240	
顶出力	Ejector tonnage	kN	151	
动力/电热	POWER UNIT			
液压系统压力	Hydraulic system pressure	MPa	17.5	
油泵马达	Pump motor power	kW	50.2+36.5	
电热功率	Heater power	kW	38.5	
温度控制区数	Number of temp control zones	—	6	
其它	OTHERS			
油箱容积	Oil tank	L (升)	550	
外形尺寸 (L x W x H)	Machine dimension (L x W x H)	m	9.2×2.3×2.5	
机器重量	Machine weight	Ton	24.5	

### 模板尺寸 PLATEN DIMENSION

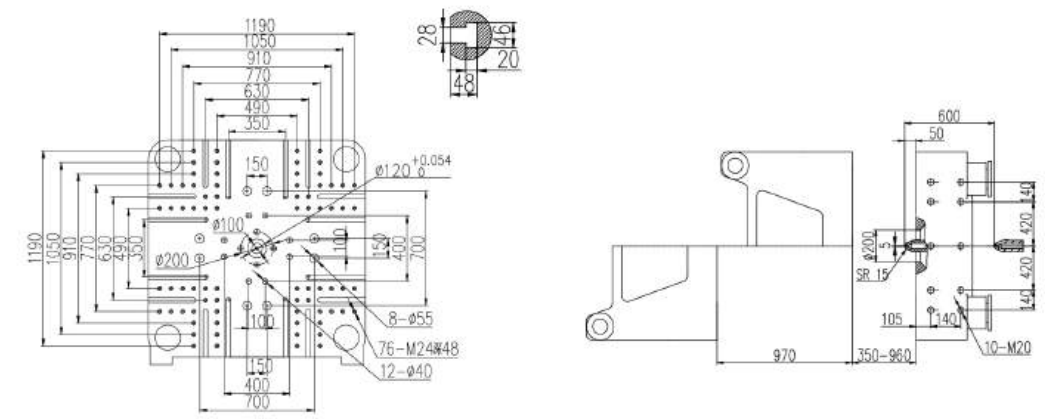


说明：由于产品改进，技术参数的变更，恕不另行通知。

## 技术参数表 SPECIFICATIONS

参数	PARAMETER	UNIT	HMD700NS	
国际公认型号	International size rating	—	2860/700	
注射装置	INJECTION UNIT			
理论注射容量	Injection volume(theoretical)	cm <sup>3</sup>	1385	1590
注射重量	Injection weight(PS)	g (克)	1260	1447
		oz (盎司)	44.4	51
注射速率	Injection rate	g/s	708	813
螺杆直径	Screw diameter	mm	70	75
注射压力	Injection pressure	MPa	206	180
螺杆长径比	Screw L/D ratio	—	22:1	22:1
螺杆行程	Screw stroke	mm	360	
螺杆转速	Screw speed	r/ min	0 ~ 180	
合模装置	CLAMPING UNIT			
锁模力	Clamping force	kN	7000	
移模行程	Mold opening stroke	mm	970	
模板尺寸	Platen size	mm	1325×1345	
拉杆内间距	Dist. between tie bars (H × V)	mm	970×930	
模板最大距离	Max.daylight	mm	1930	
容模量 (最小—最大)	Mold thickness(Min—Max)	mm	350 ~ 960	
顶出行程	Ejector stroke	mm	265	
顶出力	Ejector tonnage	kN	182	
动力/电热	POWER UNIT			
液压系统压力	Hydraulic system pressure	MPa	17.5	
油泵马达	Pump motor power	kW	60+60	
电热功率	Heater power	kW	52.7	
温度控制区数	Number of temp control zones	—	6	
其它	OTHERS			
油箱容积	Oil tank	L (升)	680	
外形尺寸 (L x W x H)	Machine dimension (L x W x H)	m	9.7×2.4×2.7	
机器重量	Machine weight	Ton	31.5	

### 模板尺寸 PLATEN DIMENSION



Remark: We reserve the right to make any technical improvement without prior notice.

